

2324 75TH AVE NE • LAKE STEVENS, WA 98258

2.17 Acre Property with 2 Homes and 3 Garages

MLS #1576317

Grand 4,848 sq. ft. gated luxury estate with additional 1,700 sq. ft. guest home. Great for mother-in-law. All on 2.17 acres of land. Bring your hobbies, collectible cars, boats etc. . . . set up your metal or wood working shop here or possible in-home business. Endless options, enjoy the expansive panoramic views of the Puget Sound, Olympic Mountains, Snohomish River and the city itself. Secure remote gated entry.

PROPERTY DIMENSIONS

- 2.17 acres total
- 6,548 sq. ft. total living space for both homes
- 2,509 sq. ft. total garage space for both homes

THE MAIN HOME

- 4,848 sq. ft. main home built in 2003
- 4 bedrooms, 4 full baths
- 709 sq. ft. oversized attached 2-car garage

THE GUEST HOME

- 1,700 sq. ft. guest home built in 2017
- 3 bedrooms, 1 full bath
- 24' wide x 50' deep attached garage with 12' garage door and 14' ceilings
- Upper and lower storage room, approximately 10' deep x 24' wide, with propane heating system
- Additional detached 20' x 30' garage with two 10' doors located north of guest home

For more information or to arrange a private tour, contact Bruce and his team today.

John L. Scott
REAL ESTATE

Bruce Lystad, Listing Broker
425-750-7006
brucelystad@gmail.com

HomesNW
Guiding You Home Since 1988

Renderings, photos, and floor plans are for illustrative purposes only and are not contractual documents. All prices and content, including all verbiage, is subject to change at any time.

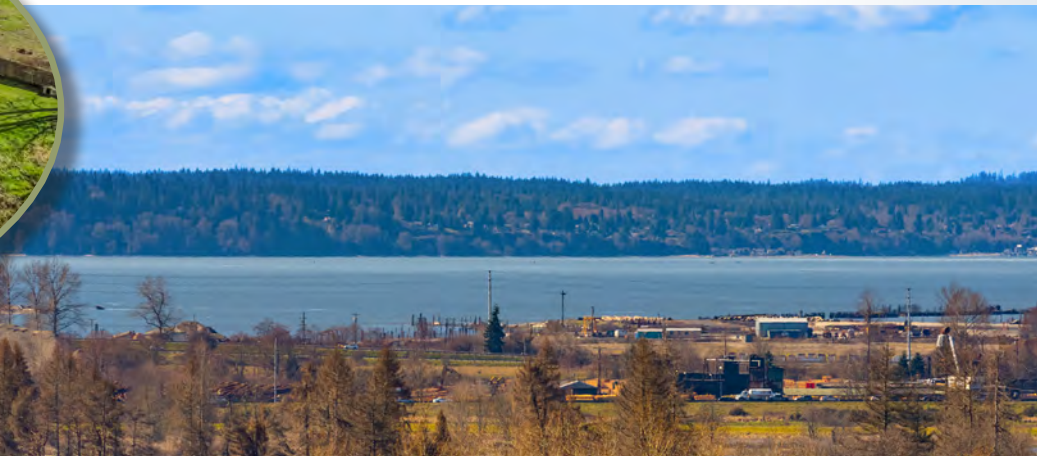
Grand Luxury Salt Water and Mountain View Home with Gated Entry



Don't miss the 41 high resolution photos at
LAKESTEVENSESTATE.COM

ON LAKE STEVENS ACREAGE

THE MAIN HOME



MAIN HOME FEATURES

- Unobstructed Sound, Olympic Mountain and Snohomish River Panoramic Views to the west
- Covered Front Porch Entry with pine soffits
- Open Great Room Plan with soaring vaulted ceilings
- 10' Ceilings on main floor and in fully finished basement
- Slab granite (Santa Cecilia) Gourmet Kitchen with full height designer backsplash, new stainless steel appliances (except cooktop) including a double oven and under-mount sink, bar seating for up to six people, and walk-in pantry
- French doors to large Covered View Deck with pine soffits
- Grand Vaulted Master Suite with glass store door to view deck, with 5 piece Master Bath with jetted tub, slab granite (Baltic Brown) counters, large walk-in closet
- Slab granite full Main Bath
- Mud Room between garage and kitchen with full bath

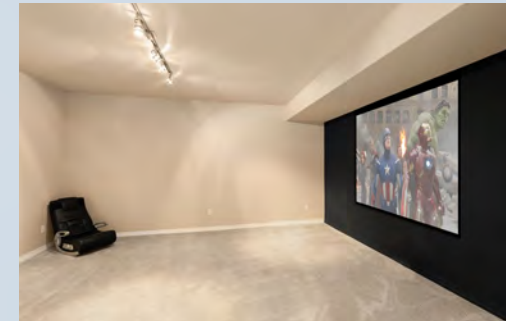
ADDITIONAL AMENITIES

- 90% efficient Forced Air Gas Heat
- All new Interior Paint
- Central Vacuum System
- Round Corners and White Painted Millwork throughout home
- Porcelain Tile Floors
- Solid Cedar Siding with New Exterior Paint
- Private Drive with Remote Gated Entry
- Outdoor Fire Pit
- Large Expansive Level Yard
- RV Parking



DOWNSTAIRS FEATURES

- Huge Rec Room with 10' ceilings and gas fireplace – pool table will stay with home (if buyer wants)
- Full Wet Bar with slab granite counters, cherry cabinets with glass uppers, set up for second kitchen
- Oversize Downstairs Bedroom with narrow reed French doors (could be second master)
- Home Theater fully wired for projection TV, surround sound and black screen
- French doors lead to Lower Patio, with natural gas and 220 outlet for future hot tub



THE GUEST HOME



GUEST HOME FEATURES

- Sound (salt water), Olympic Mountain and Snohomish River Views
- 24' wide x 50' deep Attached Garage with 12' garage door, 14' ceilings, plus upper and lower storage room approx. 10' deep x 24' wide with propane heating system
- Detached 20' x 30' Garage with (2) 10' doors
- Porcelain Tile Floors
- Slab granite Gourmet Island Kitchen with white Craftsman cabinetry, stainless steel appliances and under-mount kitchen sink, and bar seating for up to 4 people
- 10' tall Soaring Ceilings
- Dining Room with double pocket doors
- Huge Open Great Room layout
- Large Master Suite with walk-in closet
- Full Bath with slab granite counters and glass-framed shower bath enclosure and under-mount sink
- Six Panel Doors and White Painted Millwork throughout
- Large Front View Deck
- Plenty of RV Parking

