

Remodeled Clearview Home, Shy Acre, Creek



**3 BR—2.25 Baths—1,644 SF
2 Car Garage—RV Parking**

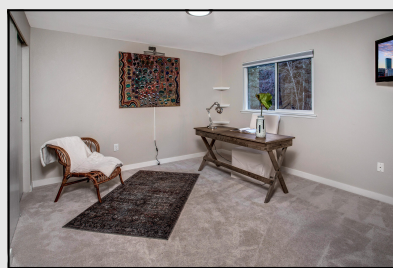
\$619,950

9628 Waverly Drive, Snohomish, 98296

More Photos: www.WaverlyDriveHome.com

Home Features:

- Fully Remodeled Interior!
- New Flooring, new lighting
- Painted mill-work & cabinets
- Fully updated bathrooms
- New vinyl windows
- Stainless steel appliances
- Open Rail Staircase
- Large formal living room w/bay window & electric fireplace
- Large Family room on main floor
- Oversize bedrooms
- Grand Master suite, 3/4 bath & large walk in closet
- Country style covered front porch
- Oversize two car garage w/ big windows
- Horse Acre lot with babbling creek
- Room to roam. Plenty of space to build a shop or detached garage
- Enjoy the outdoor fire-pit by the creek and watch the deer play
- Fenced back yard w/ raised garden beds & large deck
- Snohomish schools
- Desirable Clearview area



John L. Scott®
REAL ESTATE

HomesNW

Listing Agent: Bruce Lystad
Mobile: 425-750-7006
Brucelystad@gmail.com

