

2011 Built "Anne on Sunset" Rambler, 4 BR, 1.75 Bath Meticulously Maintained and A/C for Comfort!

MLS:1633545



\$689,950

15624 42nd Dr SE, Bothell, 98012

30 Photos at: AnneOnSunsetRambler.com

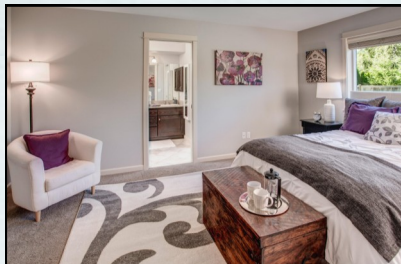
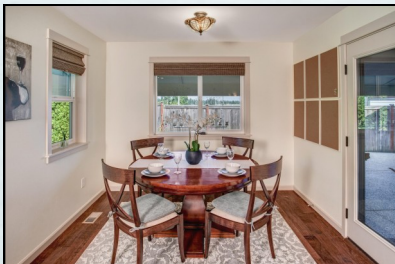


BOTHELL RAMBLER East of Mill Creek

4 BR, 1.75 Bath - Rambler
1,886 sq ft - 2-Car Garage
Forced Air: Gas Heat & A/C

HOME FEATURES:

- Open entry leads to a Den/Bedroom with glass French Doors & dbl closet.
- Grand Open soaring ceiling "Great Room" floor plan with stone gas fireplace and ceiling fan.
- Gourmet slab granite Island kitchen with Stainless Steel appliances, double oven, large eating bar and skylight.
- Private dining room off the kitchen.
- Large Master suite with 5-piece luxury bath, slab granite, jetted tub, walk in closet and skylight.
- Main Bath with slab quartz, tile floor and a custom walk in shower.
- Extra large covered outdoor living area with gas line.
- Huge fully fenced back yard with front and back Sprinkler System.
- Air Conditioner and security system.



John L. Scott
REAL ESTATE

HomesNW

Listing Agent: Bruce Lystad
Mobile: 425-750-7006
brucelystad@gmail.com

2011 Built "Anne on Sunset" Rambler, 4 BR, 1.75 Bath Meticulously Maintained and A/C for Comfort!

